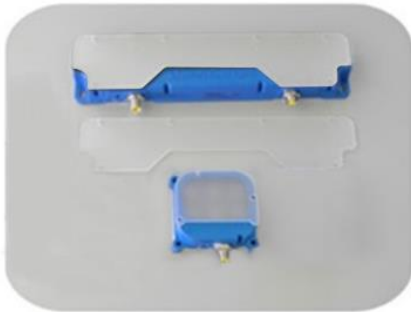




### product features



- Smart Vision Lights has Diffuser kits available. Diffusers can widen the angle of light emission and reduce reflections. A Diffuser can be added in the field.
- Diffuser Kits available for light series:  
L300, LC300, ODL300, S75, SC75, ODS75



### product specifications

Material	General Purpose Acrylic
Temperature Range	-34°C to 71°C
Color	Opaque clear and White
Wavelength Transmission	400-1000nm
Thickness	3mm (.118")
Transmittance	Single Matte: 92% :: Single White 50%



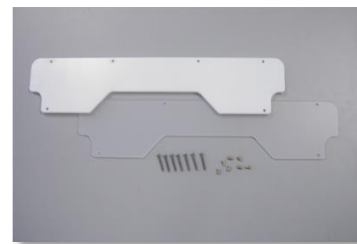
### mounting accessories



#### S75 Diffuser Kit

Kit includes opaque and white material as well as four screws and four brass inserts

One extra screw and insert included



#### L300 Diffuser Kit

Kit includes opaque and white diffuser material as well as seven screws and seven brass inserts

One extra screw and insert included



## installation instructions

New mounting for diffusers and polarizer's on L300, LC300 & ODL300 series Linear lights and S75, SC75 & ODS75 Brick lights. The New inserts add a permanent mounting for diffusers or polarizer's on lights. The new mounting allows diffusers and polarizer's to be installed in the field.

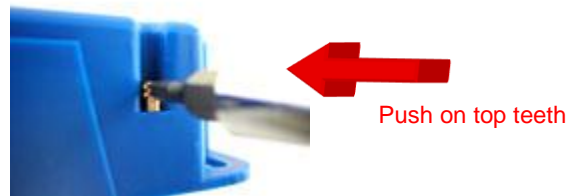
### Inserts - "push in"

Smart Vision Lights recommends installing the brass inserts with a blunt object. The inserts are best installed in the bottom of the slot see figure 1. The insert can be installed by pushing the inserts into the slot from the side see figure 2.

Heating the insert with a heat gun will help with less force and an easier install. If heating is used, heat the insert. DO NOT heat plastic housing on the light.



**Figure 1.** Insert at bottom of slot ready to be pushed in



**Figure 2.** Pushing insert into Housing

### Installing the diffuser or polarizer

Use 6 inserts/screws for a Linear light and 3 inserts/screws for a Brick light. Snug down screws to diffuser or polarizer. Over tightening screws can break diffuser/polarizer or inserts will begin to pull toward surface. Do not over tighten with excessive force. For added stability on a permanent installation, a thread locking compound may be used on the screw.



**Figure 3.** Correctly installed insert



**Figure 4.** Correctly installed insert & screw

#### Diffuser and Polarizer

L300-DKIT  
L300-LP  
S75-DKIT  
S75-LP

#### Kits now include new inserts and screws.

Diffuser Kit for Linear L300 or ODL300 Light  
Linear Polarizer Kit for L300 or ODL300 Light  
Diffuser Kit for Linear S75 or ODS75 Light  
Linear Polarizer Kit for S75 or ODS75 Light