



product features



- Direct Connection to Baumer VeriSens® XC Series Camera
- For use in External Flash Mode ONLY
- Industry Standard M8 and M12 Connection
- Power, Ground, and Flash sync
- Compatible with OverDrive Series of lights

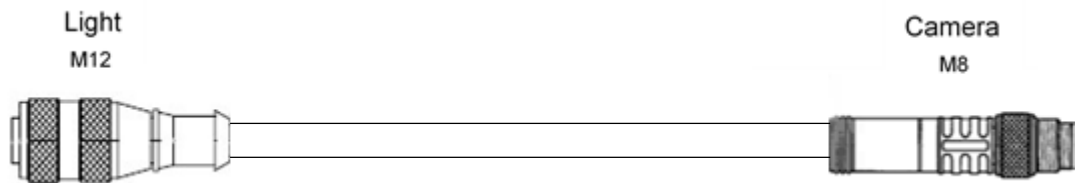


product specifications

Conductors	5x22 AWG
Temperature Range	-40°C to 105°C
Protection Class	NEMA 1,3,4,6P and IEC IP68, IP69K
Cable Jacket Color	Grey
Cable End Color	Black



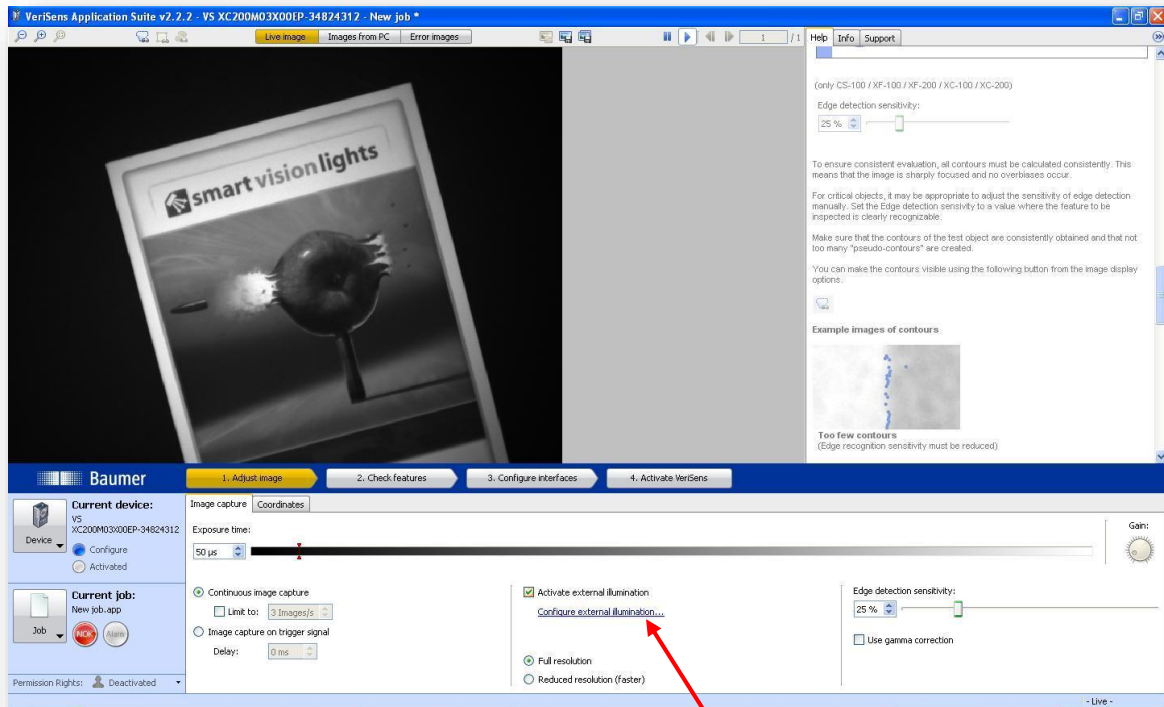
CAD image



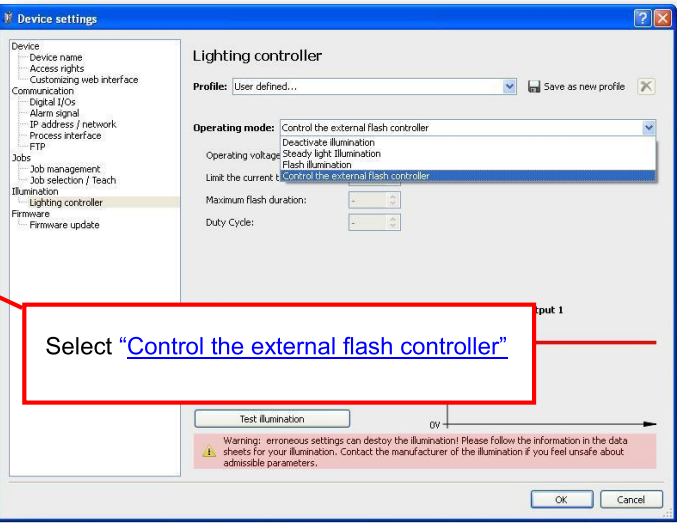
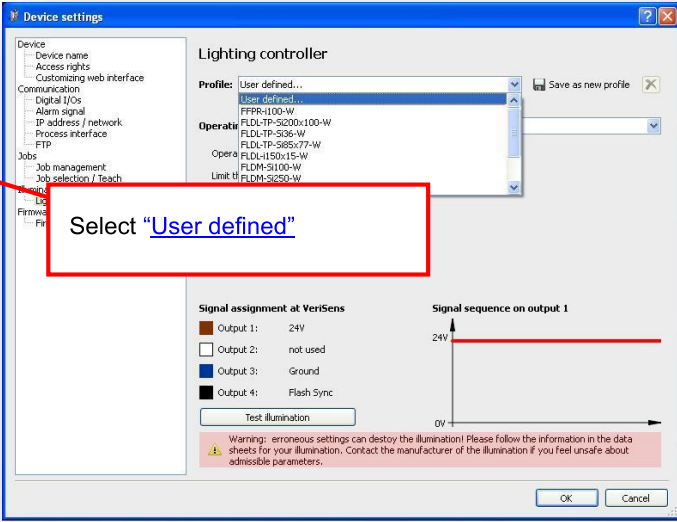
Part Number	Length
5PM12-M8-J300-CTL-FH	0.3 meter
5PM12-M8-J2000-CTL-FH	2 meter
Additional lengths available upon request	

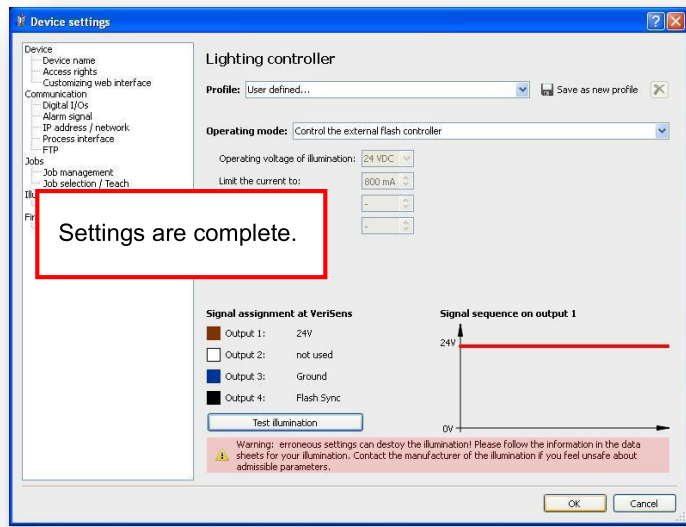


Camera software settings



Click on "[Configure external illumination](#)" to open window for light settings.





VeriSens® XC Camera using “[Control the external flash controller](#)” mode.

- 1ms limit of flash or strobe by camera
 - 10% maximum duty cycle
 - 800mA current supply
-

OverDrive Lights

- OverDrive lights are compatible with the VeriSens® XR “flash” configuration. The OverDrive lights store energy in the light. The Smart Driver supplies all the energy needed to strobe the light for duration of the “flash” or strobe time of the VeriSens® XC camera.
- OverDrive lights are high output, high speed light specifically for short camera exposure image acquisition times that need extreme output. Example A shows the VeriSens® XR camera with a 50 us (microsecond) image exposure using the ODL300 light.
- OverDrive lights with Smart Driver are protected from damage caused by over current and long duration “flash” or strobe times. The OverDrive controller protects the light f from any damage. The OverDrive lights are safe to use on the VeriSens® XR camera lights.
- OverDrive series of lights pulse the LED’s with the current listed below.

Compatible OverDrive Lights with typical LED current

Light Series	Type	LED Pulse current supplied by stored energy
ODL300	Linear Light	6 Amps
ODS75	Spot Light	4 Amps
ODS30	Spot Light	2 Amps
ODSA30	Spot Light (adjustable focus)	2 Amps
ODR80	Ring Light	2 Amps
ODR130	Ring Light	4 Amps
ODR130-16	Ring Light	8 Amps



Example A

The screenshot displays the VeriSens Application Suite v2.2.2 interface. The main window shows a live image of a 'smart vision lights' product. The software is configured for a device 'YS XC200M03X00EP-34824312'. The 'Exposure time' is set to 50 μ s, which is circled in red. A red box highlights this setting with the text '50 microsecond exposure time. Note: low gain - default'. The 'Gain' is set to its default value, also circled in red. The 'Edge detection sensitivity' is set to 25%. The interface includes a 'Help' menu, 'Info', and 'Support' options. A 'NOTE' section provides guidance on exposure time and gain settings.

VeriSens Application Suite v2.2.2 - YS XC200M03X00EP-34824312 - New job *

Live image | Images from PC | Error images

Help | Info | Support

Image acquisition

Exposure time: 1830 μ s

Set the exposure time that should be used for the acquisition.

NOTE

Please be aware that, if exposure time is extended, images may become blurred because of movement of the object. In this case, reduce the exposure time until a sharp image of the object is produced and increase the amplification value for this...

Gain:

The image can also be brightened using the control gain.

NOTE

Higher amplification values result in increased image graininess and make stable analysis more difficult. If sufficient image brightness is not achieved, use external illumination.

Generating automatic suggestion...

Click on Generating automatic suggestion ... to view a suggestion for illumination settings.

Adjust image - suggestion

Baumer

1. Adjust image | 2. Check features

Current device: YS XC200M03X00EP-34824312

Device: YS XC200M03X00EP-34824312

Configure | Activated

Current job: New job.app

Job: [Stop] [Start]

Permission Rights: Deactivated

Exposure time: 50 μ s

Continuous image capture: [Limit to: 3 Images/s]

Image capture on trigger signal: [Delay: 0 ms]

Activate external illumination
Configure external illumination...

Full resolution
 Reduced resolution (faster)

Edge detection sensitivity: 25%

Use gamma correction

- Live -

50 microsecond exposure time.
Note: low gain - default