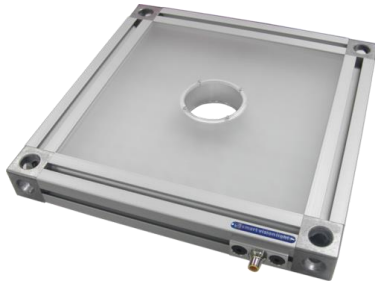



product features


- 128, 1mm² Die High Current LEDs
- Different Lenses Available
- 45mm Industrial Frame
- T-Slot For Mounting
- Conversion Adapters For Different Cameras
- PNP and NPN Strobe Input
- Continuous Operation or Strobe Mode
- Analog Intensity 0-10VDC Signal


product specifications

Electrical Input	24VDC +/- 5%
Current	Max. 2A
Wattage	Max. 48W
Strobe Input	PNP ▶ +4VDC or greater to activate. NPN ▶ GND (<1VDC) to activate
PNP Line	3.7mA @ 3VDC 6.2mA @ 5VDC 12.6mA @ 10VDC 30.4mA @ 24VDC
NPN Line	22mA @ Common (0VDC)
Continuous Mode	Light will be in continuous mode by leaving signal on strobe input active
Analog Intensity	The output is adjustable from 10%-100% of brightness by a 0 -10VDC signal
Connection	5 pin M12 connector
Lifespan	100,000 hrs
IP Rating	IP50
Certification	CE and RoHS certified
IEC 62471 Rating	See page 3


product number key

RL300 – XXX – X* —» Part Number Key

Product Family:
Ring Light
RL300

Color:
470 – Blue
505 – Cyan
530 – Green
625 – Red
850 – IR
WHI - White

Lenses:
N - Narrow

* Lights come standard with Wide lenses

CE and RoHS Compliant



warnings



Attention

Please note that the power requirements are up to 2A at 24VDC. Failure to supply light with up to 2A can result in non-repeatable lighting. Contact Smart Vision Lights for more information.



wiring configuration

If Analog 0-10VDC is not used to control light intensity;
+VDC (24VDC) must be connected to Analog Input - Jumper pin 5 to pin 1

	Pin	Function	Signal	Wire Color
	1	Power In	+24VDC	BROWN
	2	NPN	Sinking Signal	WHITE
	3	GND	Ground	BLUE
	4	PNP	Sourcing Signal	BLACK
	5	Intensity Control	0-10VDC	GREY †

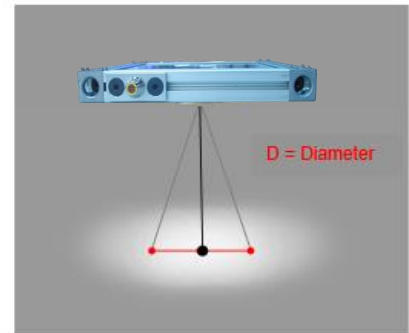
† Some cables use green with yellow stripe for 0-10V adjustment



optical performance

RL300-XXX

Working Distance mm (inches)	Pattern (80%-100% measured intensity) mm (Inches)
.5m (20")	23cm(9") D
1m (40")	37cm(14.5") D
Typical output performance	
Distance = .5 meter	Illumination (Lux)
	25000
<i>Illumination measurement taken on White Lights – 6500K</i>	



mounting & accessories



- Standard T-nut with 5/16-18x1/2" bolt



risk group

According to IEC 62471:2006. Full documentation upon request.

Notice

Exempt Group: No photobiological hazard to eyes or skin even for continuous, unrestricted use.
Applicable for wavelengths: 625 and 850.

Caution

Risk Group 1: Possibly hazardous optical radiation emitted from this product. Do not stare at operating lamp. May be harmful to eye. Safe for most applications except prolonged exposures.
Applicable for wavelengths: 470, 505, 530, and WHI.