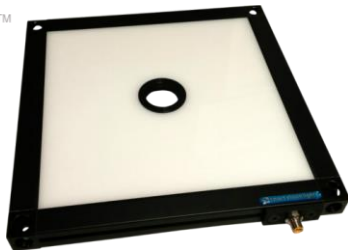


product introduction

The LLPX-H Series is Smart Vision Lights second generation of LLP-H light panel that allows for more intensity with the same familiar ease of mounting. With its new optically clear internal light dispersion grid and matte white finished backing plate more light is reflected up and out through the diffusion acrylic. Custom hole placement and two hole size options add to its versatility. The LLPX-H Series new Multi-Drive™ driver allows users to OverDrive this product for that extra burst of intensity or operate it in constant ON mode.

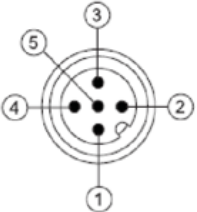
product features



- Large LED Light Panel With 30mm Frame Profile
- Multi-Drive™ Built In – No External Wiring To A Driver
- M12 Quick Disconnect Connector
- Edge Lit LED Panel
- PNP and NPN ON/OFF Input
- Custom Sizes/Hole Placement Options

constant ON product specs

Wiring configuration for **CONSTANT ON** operation

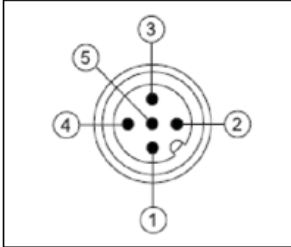
	Pin	Function	Signal	Wire Color
	1	Power In	+24VDC	BROWN
	2	NPN	Ground (common)	WHITE
	3	GND	Ground	BLUE
	4	PNP	> 4VDC	BLACK
	5	Intensity Control	1-10VDC	*GREY

* Some cables use green with yellow stripe for 1-10V adjustment.

Electrical Input	24 VDC +/- 5%
Current	306x306 = .8 – 1.2A / 459x459 = 1.2 – 1.8A <i>NOTE: current is LED color dependent</i>
Wattage	306x306 = 19.2 – 28.8W / 459x459 = 29 – 43W
Strobe Input	PNP ▶ +4VDC or greater to activate. NPN ▶ GND (<1VDC) to activate
PNP Line	6.2mA @ 5VDC 12.6mA @ 10VDC 30.4mA @ 24 VDC
NPN Line	22mA @ Common (0VDC)
Continuous Mode	Light will be in continuous mode by leaving signal on strobe input active – <i>analog dimming is active</i>
Connection	5 pin M12 connector
Lifespan	100,000 hrs
IP Rating	IP50
Certification	CE and RoHS certified
IEC 62471 Rating	See page 3 for details
Weight	306x306 = 2.5kg / 459x459 = 3.8kg
Ambient Temperature	-40° - 50° C (-40° - 122° F)



Wiring configuration for **OverDrive** operation

	Pin	Function	Signal	Wire Color
	1	Power In	+24VDC	BROWN
	2	NPN	Ground (common)	WHITE
	3	GND	Ground	BLUE
	4	PNP	> 4VDC	BLACK
	5	OverDrive Signal	Ground	GREY

Electrical Input	24 VDC +/- 5%
Current	306x306 = 3.2A Peak, .32A Average @10% DC / 459x459 = 4.8A Peak, .48A Average @10% DC
Wattage	306x306 =7.7W / 459x459 = 11.6W
Strobe Input	PNP ▶ +4VDC or greater to activate NPN ▶ GND (<1VDC) to activate 5µS LED activation time
PNP Line	3.7mA @ 3VDC 6.2mA @ 5VDC 12.6mA @ 10VDC 30.4mA @ 24 VDC
NPN Line	22mA @ Common (0VDC)
OverDrive Mode	Connect Pin 5 to GND (more info. in wiring configuration) - <i>analog dimming is inactive</i>
Duty Cycle	Max.10%
Strobe Duration	Max. 125mS



product number key

LLPX – HXX-XXX x XXX - XXX –» Part Number Key

Product Family:
Light Panel
LLPX Series

Hole:
H45 – 45mm
H65 – 65mm

Size:
306x306
459x459
*Custom
Sizes upon
Request*

Color:
470 - Blue
530 - Green
625 - Red
850 - IR
WHI – White

CE and RoHS Compliant



warnings



Attention

Please note that the power requirements vary according to size. Failure to supply each unit with its correct amount of current will result in non-repeatable lighting. Contact Smart Vision Lights for more information.



Mounting & accessories



Each LLPX-H Series backlight is constructed using Smart Vision Lights own proprietary made 30mm black anodized extrusion with 8mm T-Slot.

Drop in T-nuts make for quick and easy mounting or utilize the four corner cubes.

Complete mounting hardware is available upon request.

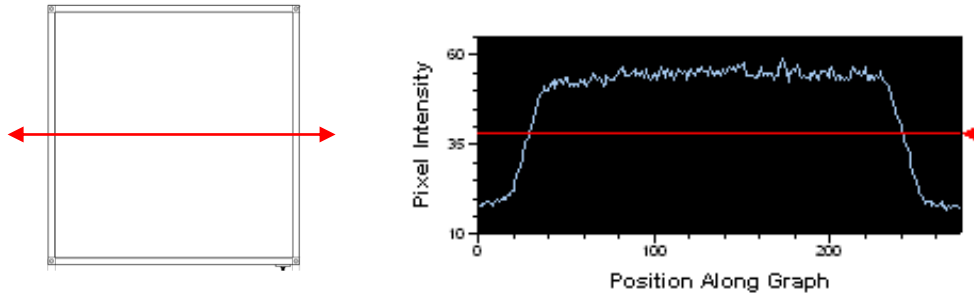


Attention

Do NOT remove corner cube for mounting. Disassembly voids warranty. Smart Vision Lights recommends using **drop in T-nuts** for mounting.



optical performance



The LLPX-H offers a very diffuse light pattern at any defined working distance. The Pixel Graph representation shows a steep drop off in intensity outside of the active area with a very diffuse light pattern inside.

Average Intensity	8,000 lux
--------------------------	------------------

*Lux measurement taken at surface of LLPX-H.



risk group

According to IEC 62471:2006. Full documentation upon request.

Notice

Exempt Group: No photobiological hazard to eyes or skin even for continuous, unrestricted use. Applicable for wavelengths: 470, 530, 625 and WHI.