



product introduction

The innovative design of the LHP Series light allows this product to project the most intense and fully focusable line on the market today. The LHP utilizes 192 high power LEDs for every 300mm in length while remaining thermally stable thanks to the heat dissipating qualities of the aluminum housing and the built in air or liquid cooling controlled via an external chilling system. With an interlocking key switch selectable between high and low intensity, the LHP Series is fully controllable and user protected. Easily identifiable positive and negative power terminals with the included 24VDC 40A power supply make for quick and easy field installation.



product features



- Brightest Line Scan Light Available
- Interlock System for User Protection
- Fully Adjustable Focal Length
- Included 24VDC 40A Power Supply per 300mm
- Available in 365nm – 940nm
- Optional Linear Polarizer – Available
- Terminal Cover Included



product specifications

Electrical Input	24VDC +/- 5%
Current	Low Power: Max. 850mA per 300mm line current at 120VAC
	High Power: Max. 6A per 300mm line current at 120VAC
Wattage	Low Power: Max. 100W per 300mm
	High Power: Max. 700W per 300mm
Continuous Mode	Light available in continuous operation only
Intensity Selector	Low/High intensity controlled by interlock key switch
Connection	Direct +24VDC and GND from power supply
Ambient Operating Temp.	-20°C - 50°C (-4°F - 122°F)
IP Rating	IP50
Weight	~2960g/300mm
Compliances	CE and RoHS
IEC62471 Rating	See page 3



product number key

LHPXXXX – XXX – LPI —» Part Number Key

Product Family: Line Scan Light LHP Series	Length: Available in 300mm increments up to 3 meters	Color: 365/395 – UV 470 – Blue 505 – Cyan 530 – Green 625 – Red 850/940 – IR WHI - White	Polarizer: Optional
---	--	--	-------------------------------

CE and RoHS Compliant



warnings



Attention

Please note that the power requirements are 6A line current at 120VAC per 300mm. Failure to supply the power supply with 6A of line current will result in non-repeatable lighting. Contact SVL for more information.



Warning

Operation of the LHP in the **high power mode** requires the use of the external water chilling system. Failure to implement the chilling system will result in non-warranty damage to the product. Operation in the **low power mode** does not require the external water chiller although it is recommended.



wiring configuration

Function	Wire Color
(1) 24VDC	RED
(2) Ground	BLACK

* Power must be provided by the included 24VDC power supply.



focusing & adjustments



Manual Focusing Adjustment Screws

Four manual adjustment screws focus the LHP to the proper working distance needed for each application.



Alignment Indicators

Alignment markings are engraved into the housing that allows for visual verification of proper focusing of the LHP product.

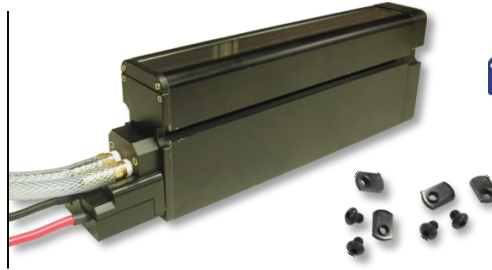
Recommended Working Distance	130-180mm
Approximate Line Width	4-9mm



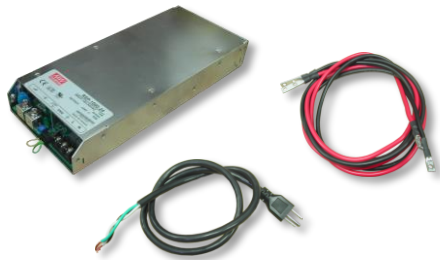
mounting & accessories

T-slot mounting channel provided on both sides of LHP light.

- Mounting hardware included
- Terminal cover included



external components



External Power Supply (included)

24VDC 40A Power Supply per 300mm
Power cord and 6' DC power cables included



External Chilling System (optional)

Used to regulate and maintain a safe operating temperature of the LHP300 in the high output mode

Power cord and 6' inlet and outlet hoses included



Linear Polarizer (optional) Patent Pending

The optional linear polarizer was built to withstand the high intensity of the LHP300



risk group

According to IEC 62471:2006. Full documentation upon request.

Caution

Risk Group 2: Eye or skin irritation may result from exposure. Use appropriate shielding. Does not pose optical hazard if aversion responses limit exposure.

Applicable for wavelengths: 470, 505, 530, 625, 850, 940, WHI

Caution

Risk Group 2: UV emitted from this product. Eye or skin irritation may result from exposure. Use appropriate shielding. Does not pose optical hazard if aversion responses limit exposure.

Applicable for wavelengths: 365, 395