

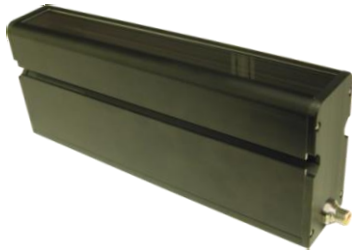


product introduction

The innovative design of the LCHP Series light allows this product to project a fixed focus line with clear define edges. The LCHP utilizes 72 high power LEDs for every 300mm in length while remaining thermally stable thanks to the heat dissipating qualities of the aluminum housing. With a user friendly 5-pin M12 plug convenience and familiarity makes this light a great line scan light solution.



product features



- Convenient 5-Pin M12 Connectivity
- No Need For External Chilling System
- Backlight Lensing Available
- Available in Three Wavelengths
- Optional Linear Polarizer – Available



product specifications

Electrical Input	24VDC +/-5%
Current	Max. 1.1A
Wattage	Max. 26W
Continuous Mode	Light available in continuous operation only
Ambient Operating Temp.	-20° - 50° C (-4° - 122° F)
IP Rating	IP50
Weight	~2000g/300mm
Compliances	CE and RoHS
IEC62471 Rating	See page 2



product number key

LCHPXXX – XXX

Product Family:
Line Scan Light
LCHP Series

Length:
300 – 300mm
600 – 600mm

Color:
470 – Blue
625 – Red
WHI – White

—» **Part Number Key**

CE and RoHS Compliant



warnings

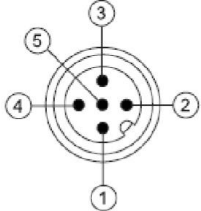


Attention

Please note that the power requirements are 1.1A at 24VDC per 300mm. Failure to supply the power supply with 1.1A will result in non-repeatable lighting. Contact SVL for more information.



wiring configuration

	Pin	Function	Signal	Wire Color
1	1	Power In	+24VDC	BROWN
2	2	Not Used	Not Used	WHITE
3	3	GND	Ground	BLUE
4	4	Not Used	Not Used	BLACK
5	5	Not Used	Not Used	GREY

* Power Supply not included



mounting & accessories



Mounting Hardware included

- (4) 5/16" T-nuts
- (4) Mounting bolts



risk group

According to IEC 62471:2006. Full documentation upon request.

Caution

Risk Group 2: Eye or skin irritation may result from exposure. Use appropriate shielding. Does not pose optical hazard if aversion responses limit exposure.

Applicable for wavelengths: 470, 625, WHI