



product introduction

The KEY-L300 array utilizes 12 high intensity LEDs. Able to connect directly to the Keyence controller. Available in standard narrow, wide, and line optics with options for all standard and some custom wavelengths. Features an industry standard 5-pin M12 connector. Heat is dissipated through the aluminum back plate which allows the KEY-L300 Series to be run at a higher current allowing for greater intensity. Color availability ranges from UV to IR.



product features



- Direct-Connect to Keyence Controller
- Standard narrow lenses included – wide available
- Available wavelength range from 365nm to 940nm
- Twelve, 1mm² Die High Current LEDs



product number key

KEY-L300 – XXX – X* —» Part Number Key

Product Family:
Linear Light
Keyence Series

Color:
365, 395, 470, 505,
530, 625, 850, 940
& WHI (White)

Lenses:
W - Wide
L - Line

* Lights come standard with Narrow lenses
CE and RoHS Compliant



mounting & accessories



3-Axis Pan and Tilt Mount
available



T-mount Rail Mount
available



warnings

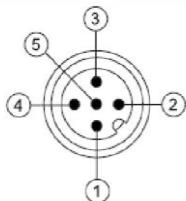


Attention

A total of twelve LEDs in the KEY-L300. Three parallel strings of four LEDs.
No LED protection – Do not apply an unregulated current source to LEDs.



wiring configuration



Function	Wire Color
1 – N/C	N/C
2 – N/C	N/C
3 – LED (-) Cathode	BLUE
4 – LED (+) Anode	BLACK
5 – N/C	N/C



risk group

According to IEC 62471:2006. Full documentation upon request.

Notice

Exempt Group: No photobiological hazard to eyes or skin even for continuous, unrestricted use.
Applicable for wavelengths: 625, 850, and 940.

Caution

Risk Group 1: Possibly hazardous optical radiation emitted from this product. Do not stare at operating lamp. May be harmful to eye. Safe for most applications except prolonged exposures.
Applicable for wavelengths: 395, 470, 505, 530, and WHI.

Notice

Risk Group 1: UV emitted from this product. Minimize exposure to eyes and skin. Use appropriate shielding. Safe for most applications except prolonged exposures.
Applicable for wavelengths: 395

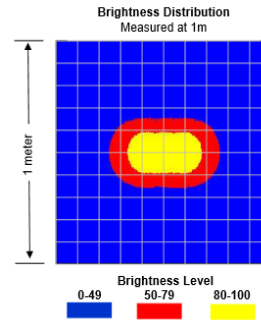
Caution

Risk Group 2: UV emitted from this product. Eye or skin irritation may result from exposure. Use appropriate shielding. Does not pose optical hazard if aversion responses limit exposure.
Applicable for wavelengths: 365



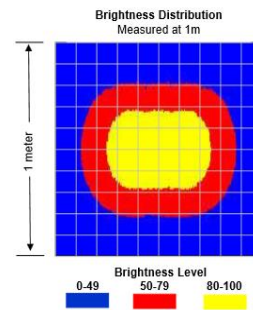
KEY-L300-XXX

Working Distance mm (inches)	Pattern (80%-100% measured intensity) mm (Inches)
.5m (19.7")	210mm(~8") H x 100mm(~4") V
1m (39.4")	250mm(~10") H x 200mm(~8") V
1.5m (59")	310mm(~12") H x 300mm(~12") V
Typical output performance	
Distance = .5 meter	Illumination (Lux) 14000
<i>Illumination measurement taken on White Lights – 6500K</i>	



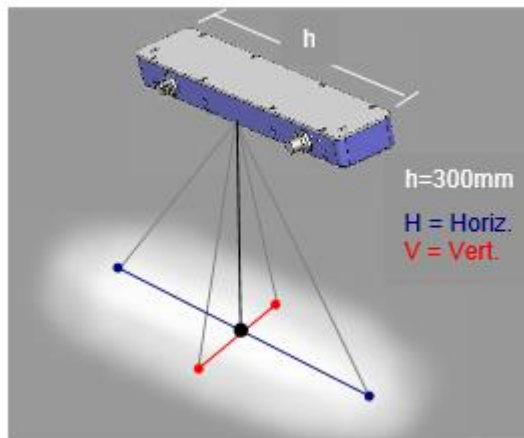
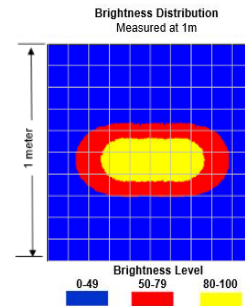
KEY-L300-XXX-W

Working Distance mm (inches)	Pattern (80%-100% measured intensity) mm (Inches)
.5m (19.7")	220mm(~9") H x 160mm(~6") V
1m (39.4")	460mm(~18") H x 420mm(~16.5") V
1.5m (59")	570mm(~22") H x 550mm(~22") V
Typical output performance	
Distance = .5 meter	Illumination (Lux) 6300
<i>Illumination measurement taken on White Lights – 6500K</i>	



KEY-L300-XXX-L

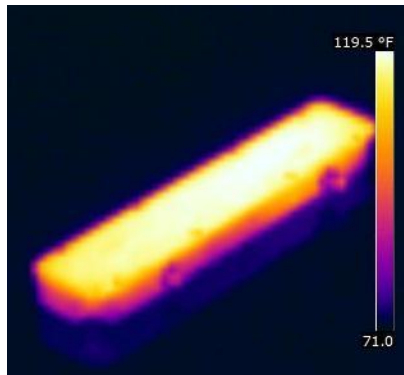
Working Distance mm (inches)	Pattern (80%-100% measured intensity) mm (Inches)
.5m (19.7")	260mm(~10") H x 100mm(~4") V
1m (39.4")	440mm(~17") H x 190mm(~7") V
1.5m (59")	660mm(~26") H x 300mm(12") V
Typical output performance	
Distance = .5 meter	Illumination (Lux) 10000
<i>Illumination measurement taken on White Lights – 6500K</i>	





thermal analysis

In constant operation the housing on KEY-L300 series lights will run at 50 C° in an ambient temperature of 25 C°.



KEY-L300 series aluminum backplates designed to transfer heat away from high power LED's.

Additional heat sinking recommended in ambient air temperatures above 25° C.

Thermal image taken after 2 hours of continuous ON operation at 25° C.