



product features



- Direct Connection to Baumer VeriSens® XC Series Camera
- For use in Steady Light Illumination ONLY
- Industry Standard M8 and M12 Connection
- Power and Ground
- Compatible with constant operation Smart Vision Lights

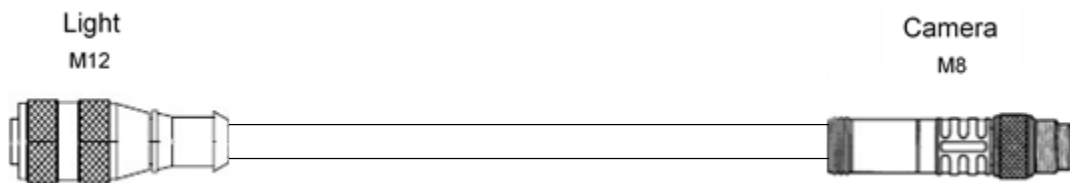


product specifications

Conductors	5x22 AWG
Temperature Range	-40°C to 105°C
Protection Class	NEMA 1,3,4,6P and IEC IP68, IP69K
Cable Jacket Color	Grey
Cable End Color	Light Grey



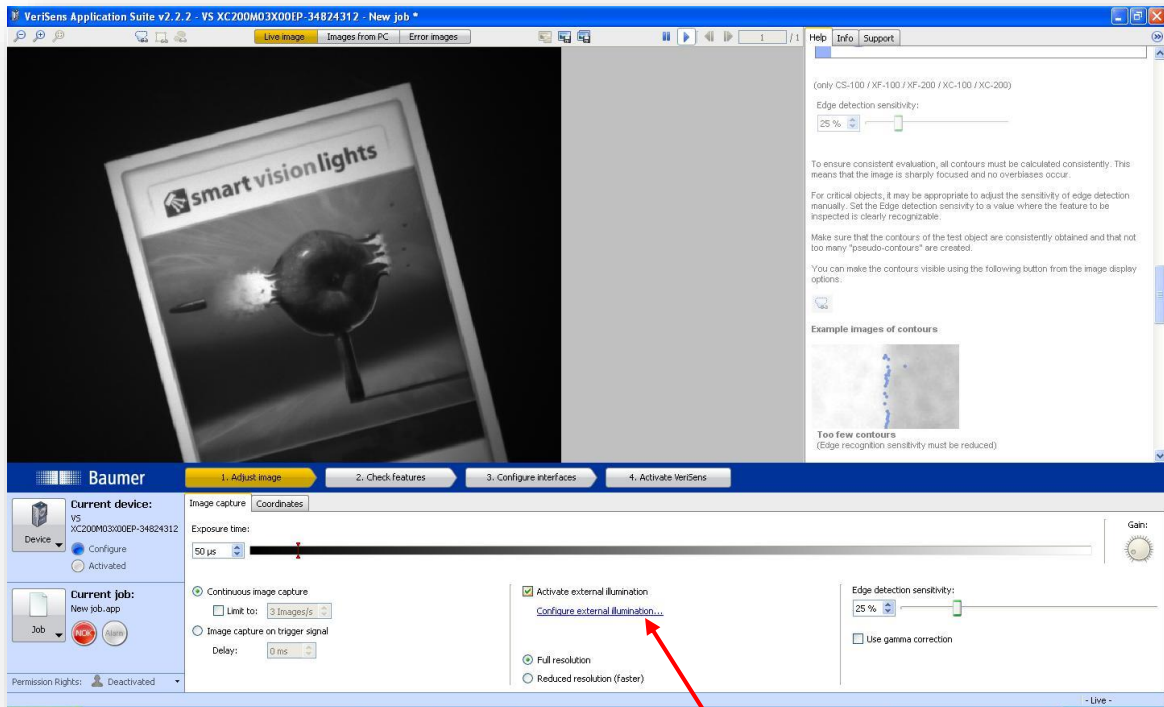
CAD image



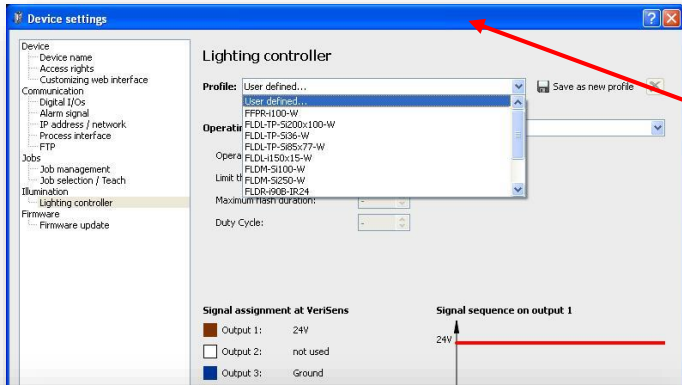
Part Number	Length
5PM12-M8-J300-CTL-CT	0.3 meter
5PM12-M8-J2000-CTL-CT	2 meter
Additional lengths available upon request	



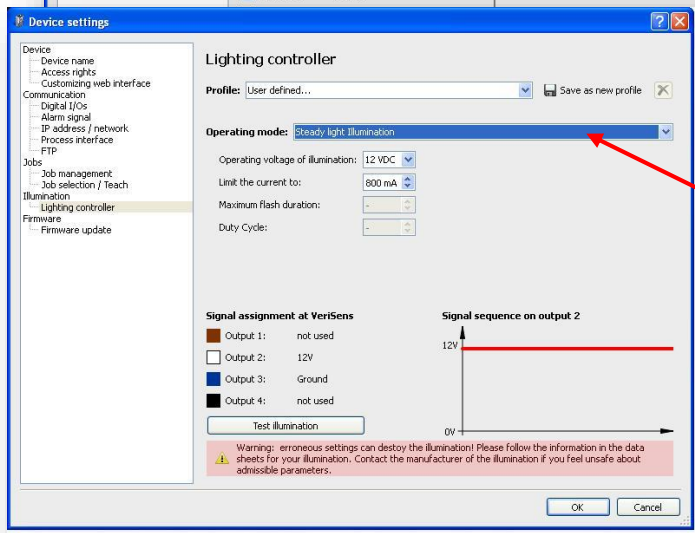
Camera software settings



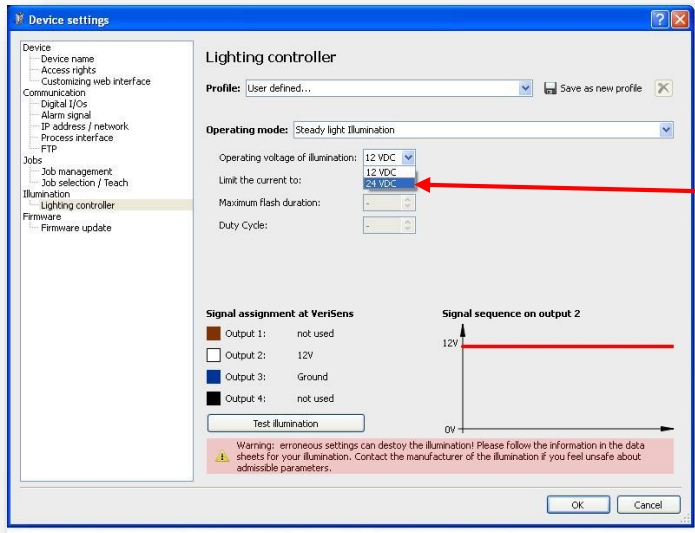
Click on "[Configure external illumination](#)" to open window for light settings.



Select "User defined"



Select "Steady light illumination"



Select "24VDC"

Settings are complete.

VeriSens® XC Camera using “[Steady light illumination](#)” mode.

- 24VDC
- 800mA current supply

Compatible Lights with typical LED current

Light Series	Type	LED Pulse current supplied by stored energy
L300	Linear Light	0.8 Amps
S75	Spot Light	0.4 Amps
S30	Spot Light	0.2 Amps
SA30	Spot Light (adjustable focus)	0.2 Amps
R80	Ring Light	0.3 Amps
R130	Ring Light	0.5 Amps

