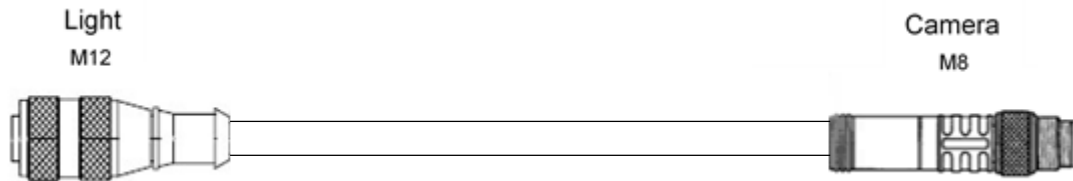



**product features**


- Direct Connection to Baumer VeriSens® XC Series Camera
- For use in External Flash Mode ONLY
- Industry Standard M8 and M12 Connection
- Power, Ground, and Flash sync
- Compatible with OverDrive Series of lights


**product specifications**

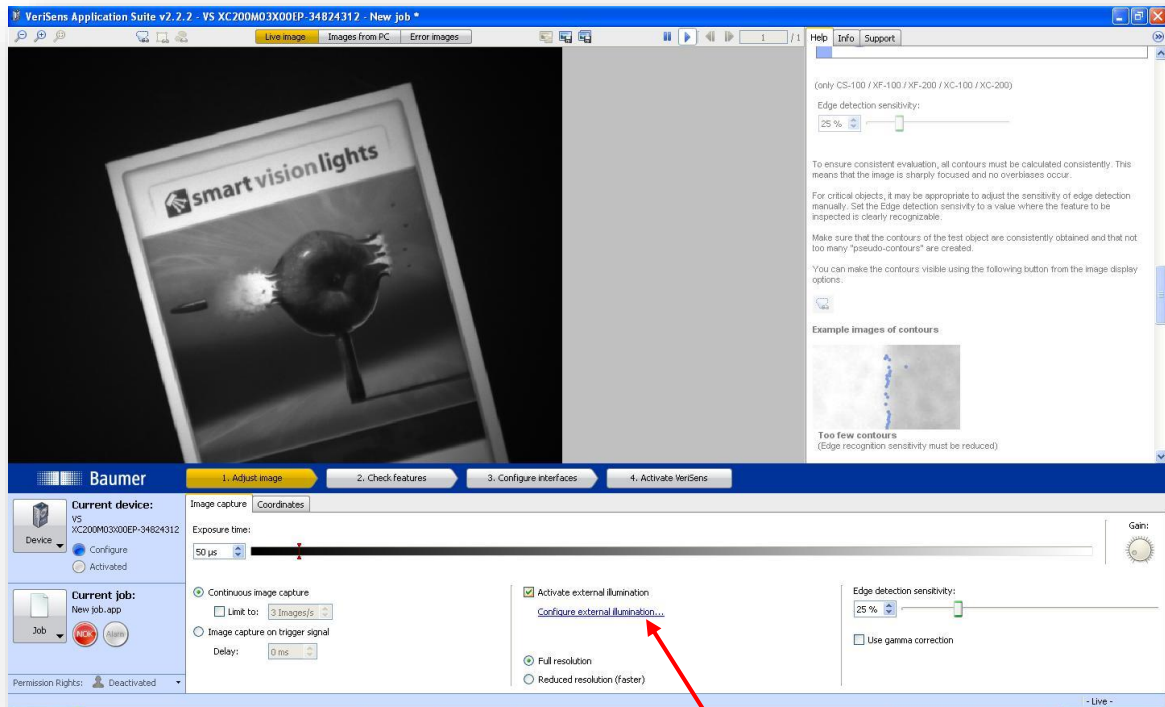
Conductors	5x22 AWG
Temperature Range	-40°C to 105°C
Protection Class	NEMA 1,3,4,6P and IEC IP68, IP69K
Cable Jacket Color	Grey
Cable End Color	Black


**CAD image**


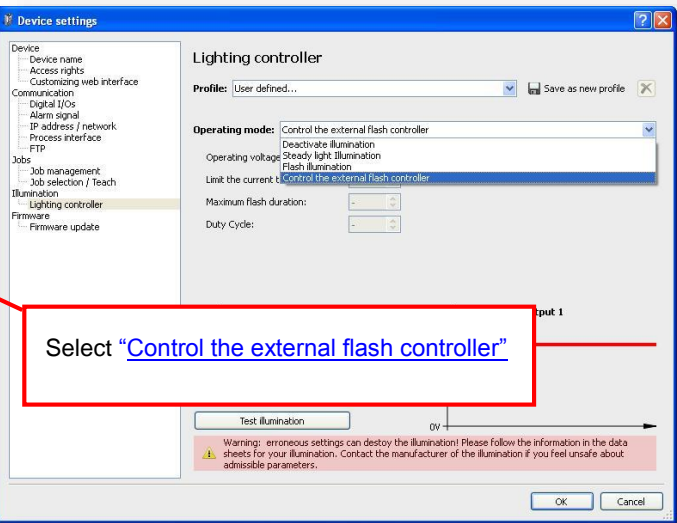
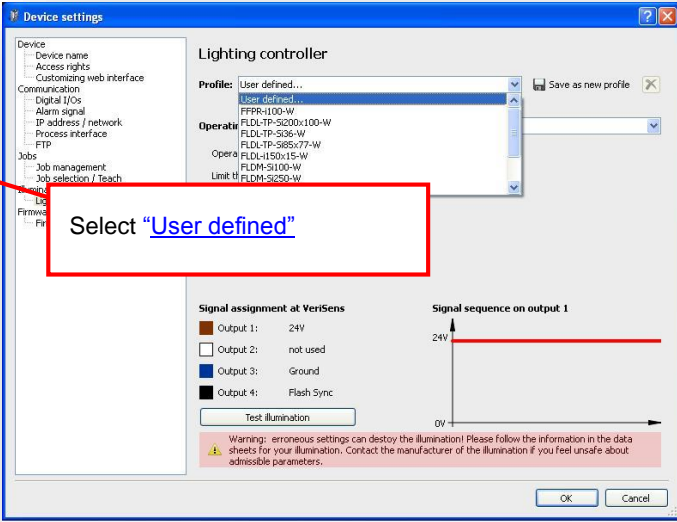
Part Number	Length
5PM12-M8-J300-CTL-FH	0.3 meter
5PM12-M8-J2000-CTL-FH	2 meter
Additional lengths available upon request	

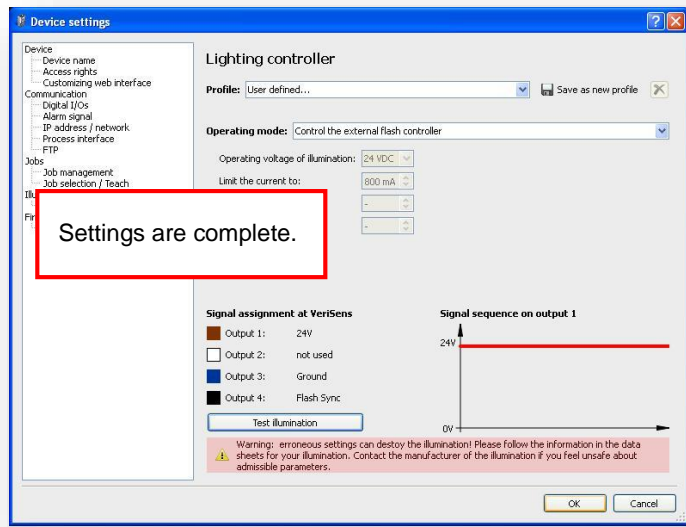


## Camera software settings



Click on "[Configure external illumination](#)" to open window for light settings.





---

VeriSens® XC Camera using “[Control the external flash controller](#)” mode.

- 1ms limit of flash or strobe by camera
  - 10% maximum duty cycle
  - 800mA current supply
-

## OverDrive Lights

- OverDrive lights are compatible with the VeriSens® XR “flash” configuration. The OverDrive lights store energy in the light. The Smart Driver supplies all the energy needed to strobe the light for duration of the “flash” or strobe time of the VeriSens® XC camera.
- OverDrive lights are high output, high speed light specifically for short camera exposure image acquisition times that need extreme output. Example A shows the VeriSens® XR camera with a 50 us (microsecond) image exposure using the ODL300 light.
- OverDrive lights with Smart Driver are protected from damage caused by over current and long duration “flash” or strobe times. The OverDrive controller protects the light f from any damage. The OverDrive lights are safe to use on the VeriSens® XR camera lights.
- OverDrive series of lights pulse the LED’s with the current listed below.

### Compatible OverDrive Lights with typical LED current

Light Series	Type	LED Pulse current supplied by stored energy
ODL300	Linear Light	6 Amps
ODS75	Spot Light	4 Amps
ODS30	Spot Light	2 Amps
ODSA30	Spot Light (adjustable focus)	2 Amps
ODR80	Ring Light	2 Amps
ODR130	Ring Light	4 Amps
ODR130-16	Ring Light	8 Amps



## Example A

The screenshot displays the VeriSens Application Suite v2.2.2 interface. The main window shows a live image of a 'smart vision lights' product. The 'Image acquisition' panel on the right shows an exposure time of 1830  $\mu\text{s}$ . A red box highlights the 'Exposure time' slider in the bottom-left panel, which is set to 50  $\mu\text{s}$ . A red callout box with the text '50 microsecond exposure time. Note: low gain - default' points to this slider. The 'Gain' slider is also visible on the right, set to a low value. The interface includes various control panels for device configuration, image capture, and analysis settings.

50 microsecond exposure time.  
Note: low gain - default